



Bernalillo County
Office of Homeland Security and Emergency Management
Situation Report



Event Name: Dog Head Fire

SITUATION REPORT: # 9

DATE AND TIME: 6/21/2016, 1400

CURRENT PRIORITIES:

- Evacuation Operations
- Sheltering Operations
- Ensure the protection of life and property
- Coordinate County Resources
- Standby Structure Protection

INCIDENT SUMMARY:

On June 14, 2016, a fire was reported on the Cibola National Forest and National Grasslands' Mountainair Ranger District known as the Dog Head Fire. The fire started approximately 10 miles West of Estancia and has spread northeast and has grown to an approximate size of 17,615 acres as of 1300 hours today.

952 personnel have been assigned to the fire.

A Type 2 Incident Management Team (IMT) assumed responsibility of the fire at 1800 6/15/2016. Type 1 Incident Management Team (IMT) took over the incident on Sunday, June 19, 2016 at 06:00am.

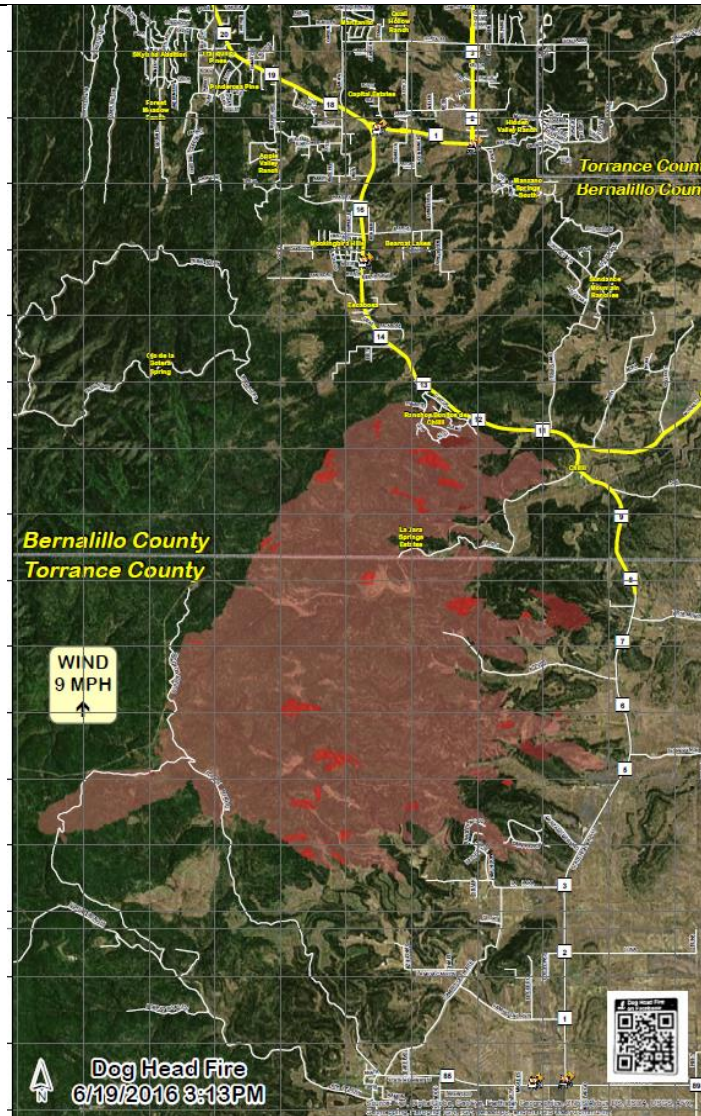
There is currently a mandatory evacuation notice for the town of Chilili, Escobosa, El Merced, Los Seis Hermanos Estates, Marianne Ranch Estates, Llano Del Sol, Tierra De Los Suenos, Ponderosa Estates, Capital Estates and Ponderosa Pines. Additionally, all residences that are located southwest of the intersection of Highway 217 and Highway 337 and all residence that are located south of Highway 217 and east of Highway 337 to the county line are asked to evacuate. The fire is active on the north and south flanks. As of 1300 the fire has not crossed highway 337. (*check map below for detailed evacuation info*)

According to the "Haines Index" used by fire personnel to measure potential of wildfire behavior the Dog Head Fire is at a #6 which is considered the highest level for that index.

The fire has "spotted" and igniting fires as far as 1.5 miles from the main fire source. Fire growth in the past 24 hours has been minimal and mostly occurred at night. Crews are patrolling and improving fire lines. The team is beginning to assess environmental damage for remediation.

Governor Susana Martinez officially declared a State of Emergency due to the Dog Head WildFire on the 15th of June 2016.

Bernalillo County Commissioners declare an emergency in the county due to the Dog Head Wildfire.

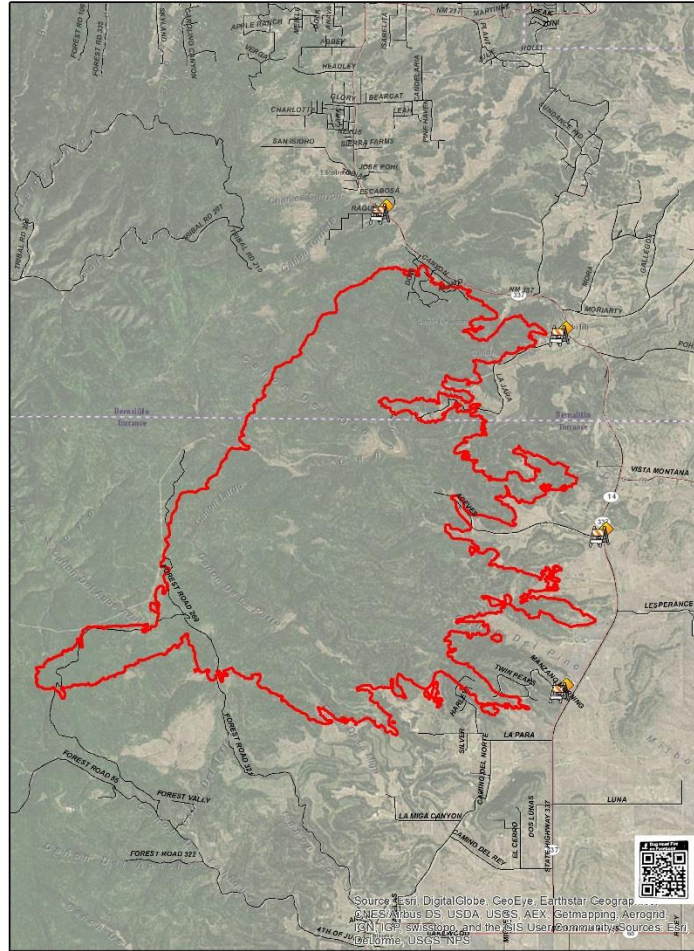


ROAD CLOSURES (see map):

“Attached you will find the “Dog Head Fire” evacuation area map for Bernalillo County. This map is up to date and current as of 1900 hours on 06-17-16.”

- Red shaded area is MANDATORY evacuation
- Yellow shaded area is VOLUNTARY

“All other areas should be cognizant of the fire danger and periodically check for updates to see if evacuation orders change. In addition, please be aware that PNM has cut electrical power in all RED shaded areas. However, it is possible that homes in the mandatory evacuation area may retain power while some homes in the voluntary area lose power. This is due to the fact that power grids do not necessarily follow the same lines as roads and subdivisions. Road closures are indicated by a traffic icon on the map. While under a mandatory evacuation no civilian traffic will be allowed into the RED shaded area while roadblocks are in place. If you experience an emergency where you need access to a red shaded area you must check with the Bernalillo County Sheriff’s Office prior to attempting entry. The Sheriff’s Office will evaluate your request and determine if access can safely be made and granted. The Sheriff’s Office will have 24 hour patrols, consisting of 20 deputies and 30 National Guard members in the evacuated areas and they have been directed to contact and ID all persons observed inside the red shaded areas. Preservation of life and property are our top priorities and we appreciate your patience and understanding as we continue our service to you.”



Dog Head Fire Effective 8:00 AM 6\22\16

REPORTED DAMAGE

As of the public meeting Torrance County reported that 24 homes and 21 other buildings have been damaged due to the fire.

EMERGENCY SUPPORT FUNCTIONS (ESF) ACTIVATED

- ESF #1 Transportation
- ESF # 3 Public Works Infrastructure and Facilities
- ESF # 4 Fire Fighting
- ESF # 5 Emergency Management
- ESF # 6 Mass Care (Park and Rec, Animal Services)
- ESF #7 Logistics Management and Resource Support (Purchasing and Asset Management)
- ESF#12 Public Works Technical Service
- ESF # 13 Law Enforcement
- ESF # 15 External Affairs
- Support: New Mexico National Guard (Army/Air Force)

RESOURCE REQUEST

Bernalillo County Sheriff's Department-Captain Josh Campos (505) 220-0657

15-person x 1 Law Enforcement Strike Team
20 National Guard members assisting the Sheriff's Office

Bernalillo County Fire Department Resources-Division Chief Chris Gober (505) 263-4635

PIO

Larry Gallegos 505-328-6668

Deputy Felicia Romero 505- 259-6126

Coordinating with the Joint Information Center established at the Incident Command Center in Estancia. Bernalillo County has an individual working at the Joint Information Center. Public Information also has a physical presence at the county's Emergency Operations Center, along with an off-site social media webmaster who is posting information on the county's website that is being reposted by the Joint Information Center social media team and others.

Working on information packages for the residents to provide tips to locals.

Southwest Area Type 1 Incident Management Team Liaison Officer-

Ben Fisk (928) 607-5335

ESF #1 – Transportation NMDOT:

Electronic sign boards to the highways to put evacuation/ shelter information for residents

ESF #3 Public Works Infrastructure and Facilities

Light stands were brought to controlled access points. A fuel truck is being acquired.

PNM issued a warning against the use of generators.

ESF # 4 Fire Fighting 1400 06/18/2016

Comfortable in SW quadrant, bringing in dozers to assist with line breaks. Concerns with the finger (SE quadrant) due to rocky terrain and hard to reach for crews. There have been flare ups in the central area of the fire zone (SSE). Containment is estimated at 9%

Fire is 46% contained and should be at 100% by the end of the week. Phase II of fire will be rehab and placing people back into their homes. Sand bags will be placed in trailer at station #36 and towed out. Cost of fire is estimated at \$5.7 million.

ESF # 5 Emergency Management

OHSEM-Richard Clark (505) 382-4640

Shelter Trailer

Emergency Manager Sandoval County: 1 person for Sunday

ESF # 6 Mass Care (Park and Rec, Animal Services)

Park and Recreation: Andrew Parra @ (505) 999-9086 until 2200; Jr LaFarge Esparza @ (505) 328-4818 after 2200

2 Shelter workers

ESF #6 has had a drop in people using shelters; 112 animals are still being housed at animal shelter.

OPEN SHELTERS: Bernalillo County along with the Red Cross have opened a shelter in Tijeras in response to the fire. T-Mobile set up 7 tablets with Wi-Fi available for evacuees to check out and use. Wi-Fi is up and running and available for staff and evacuees.

Los Vecinos Community Center: 478 1/2 Old Hwy 66 Tijeras, NM 87059

Shelter Population: **89 check-ins , 55 lunches**

Red Cross working with local laundromat for laundry services (information provided by Pet Shelter)

Bernalillo County Animal Services is Coordinating with the NM SEOC ESF-11 Coordinator to establish livestock, including small livestock and fowl, sheltering at the NM Expo facility. The request also includes two Incident Management personnel to help manage the shelter. As this sheltering option becomes available multiple methods of media delivery will be utilized to inform the public.

Enter gate 6 at Lomas and San Pedro.

Questions should be directed to Bernalillo Animal Care Services @ 505-468-pets

Animal Services-Misha Goodman (505) 975-5945

Small Animal Shelter

Small Animal Transport Vehicle

Large Animal Shelter

Large Animal Transport

Pet Population: **300+ animals at Torrance County, 220 at Bernalillo County**

ESF #7: Logistics Management and Resource Support (Purchasing and Asset Management)

Porta Johns Cleaned. Working with Roadrunner for trash issues.

Accounting and Budget has one person today.

3 staff going to Los Vecinos Community Center in Tijeras from 2 am to 7 pm..

Donation Trailer at the Library needs to be received.

Request for purchasing compile lists for each section working on designating times for runs.

Track gas, mileage, etc. Sign forms for mileage and turn in. All staff reminded to sign in for accountability.

Hunger Warehouse at Los Vecinos has supplies for evacuees/residents. There will be signs designating items and inventory lists for accountability.

BC employees need to ensure they log in/out and all receipts saved and documented to capture costs. SO is tracking man hours and equipment.

ESF#12 Public Works Technical Service

Public Works-Brad Catanach (505) 848-1518

7,000-gallon water tank that is now stationed in Chilili

Working on placing lights at 217/337, 337 and 217/Martinez and Mojarity Road. Currently have 2 in place.

Awnings and chairs also delivered to checkpoints.

Shelter showers and porta johns cleaned. Custodial services twice a day at Los Vecinos.

Picking up trailers for Hunger Warehouse.

PW will assist with traffic contro:l Moriarty and Hwy 337 and County Line and 337 and Raquel and 337.

Electronic message board warning people to maintain 15MPH speed. Will assist with coordination of sand bag trailer. Drop off waste (roll outs) and loader will be available at Hwy 337 and 217 till 3:00.

ESF # 13 Law Enforcement

SO still working with the Guard on roadblock (337, 227/217, 217/Martinez). Added an additional roadblock on Mojarity Road. Apple Valley Ranch received the evacuation notification yesterday and were evacuated.

SO has 8 teams to make evacuations.SO is performing evacuations and patrols for safety ONLY. If residents are unwilling to evacuate their residence, they are asked to sign a disclosure which states they were notified that they will not be a priority should the fire shift. There have been some issues with people trying to get back in, and security has been tightened up to screen these individuals.

Roadblock on Mojarity moved to Mojarity and Gutierrez do to individuals bypassing roadblock via dirt road to enter the area.

SO will be providing escort to mandatory evacuation area on a case-by case basis and will continue to provide control to mandatory evacuation area.

SO will be opening all roads at 8:00 a.m. June 22, 2016. Check points will be taken down and moved to hwy 233; light at Escabosa, and county line. Roving patrol will be take place till 8:00 a.m. June 22, 2016. Soft closures allowing residents in at LaJara by military personnel. Reduced speed signs at county line to Escabosa.

ESF # 15 External Affairs

Support: New Mexico National Guard (Army/Air Force)

National Guard

Army LNO – CPT Maylan

Air Force LNO – SMSgt Valenti

90 personnel on ground: Working refueling mission.

18 Military Police soldiers from the 126th MP company and the 919th MP company conducting courtesy patrols in the volunteer evacuation zone.

22 Air National Guard airmen from the 150th SOC are conducting security check points and assisting BCSO with patrols in the evacuated area.

20 soldiers from the 642nd CRC conducting check points in Estancia.

18 Soldiers from the 515th BSB watering livestock at the Torrance County Fairgrounds.

3 soldiers from the 64th CST assisting in improving communication in the Tijeras area.

9 soldiers embedded in the Bernalillo command center.

National Guard will assist with demobilization and emergency response; will maintain check points.

National Guard will last out to ensure all is contained.

*64CST is located at the 217/337 checkpoint attempting to establish repeaters and sat phones to bridge the gap for NG and Police. Current issues are inoperability.

Future Ops-ANG and ARNG mobile command posts stationed at Fire Station 4.

NATIONAL WEATHER SERVICE

A boundary will move from east to west across the fire this evening. Humidity will rise behind it but the winds will also strengthen, especially along the eastern flats.

DOG HEAD FIRE UPDATE 6/17/2016 – 9:30 AM

Estimated Acres: 17,615

Start Date: June 14, 2016

Cause: Under investigation

Location: 6 miles NW of Tajiique, NM

Containment: 9%

Fuels: heavy dead/down timber, ponderosa pine stands

Total personnel: 952

Dog Head Spot Weather:

VERY HOT AND UNSTABLE CONDITIONS WILL CONTINUE FOR CENTRAL AND WESTERN NEW MEXICO THROUGH MONDAY WHILE THE EAST SEES SLIGHT COOLING AND MOISTENING. THE MOISTENING TREND WILL PUSH WEST INTO MORE OF CENTRAL AND WESTERN NEW MEXICO TUESDAY AND WEDNESDAY. THE COVERAGE OF SHOWERS AND STORMS WILL INCREASE AS WELL. STORMS WILL RANGE FROM DRY ACROSS THE WEST TO WET/DRY IN CENTRAL NEW MEXICO AND WET IN THE EAST. NOT MUCH CHANGE IS EXPECTED THROUGH NEXT WEEKEND AS HOT TEMPERATURES AND BETTER MOISTURE TAKE HOLD OF THE REGION.

Max Temp 92F

Max Humidity 69

Haines Index Decreasing to 4 after midnight.

Wind SE 10-15

